



# BMH TECHNOLOGY

Fuelling a Cleaner Future

Janet He  
General Manager, China



# BMH IN A NUTSHELL

Founded in 1929, HQ in Rauma, Finland.

Today we combat two global problems:

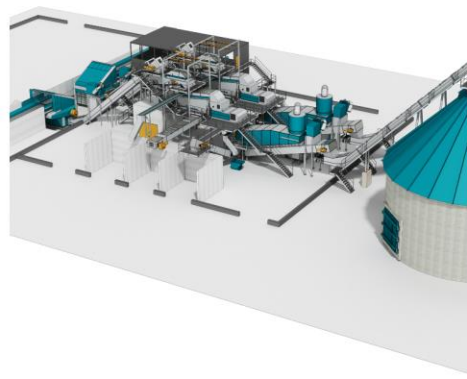
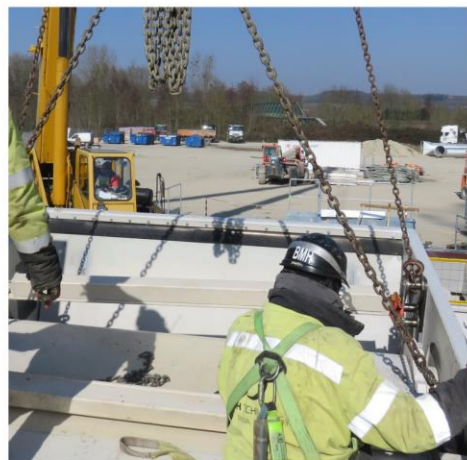
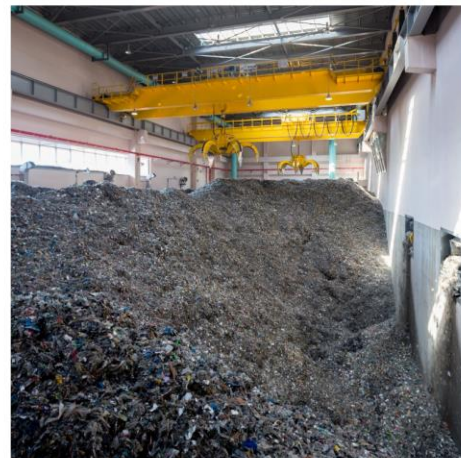
- the amount of **waste** dumped on landfills
- **CO<sub>2</sub> emissions** caused by fossil fuels.

We provide

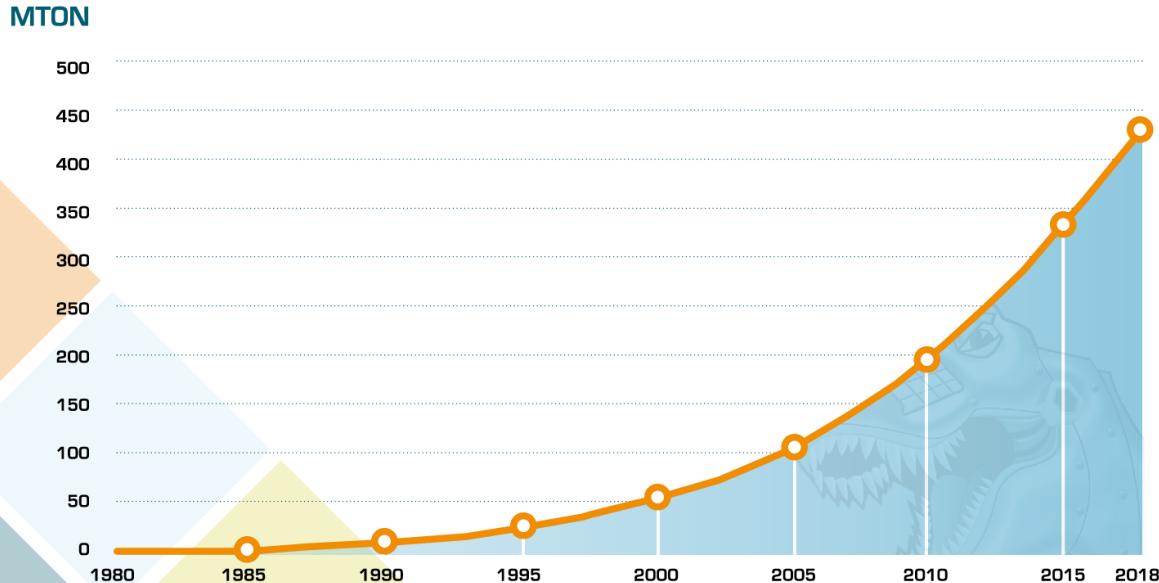
- Solid biofuel handling systems
- Waste refining solutions
- Life Cycle Services

for power plants, pulp and paper mills, cement kilns and waste management companies.





# FOSSIL CO<sub>2</sub> SAVINGS achieved with BMH solutions



Our solutions have saved the earth some **514 million tonnes of CO<sub>2</sub> emissions** since 1980.

This equals **213 million single flights** around the world.



# WASTE REFINING SOLUTIONS

Recovering value from waste.

18.1.2021

5



# SRF/RDF

## – alternatives to fossil fuels

**Solid  
Recovered  
Fuel**

**Refuse  
Derived  
Fuel**

**Industrial &  
Commercial  
Waste**

**Municipal  
Solid  
Waste**

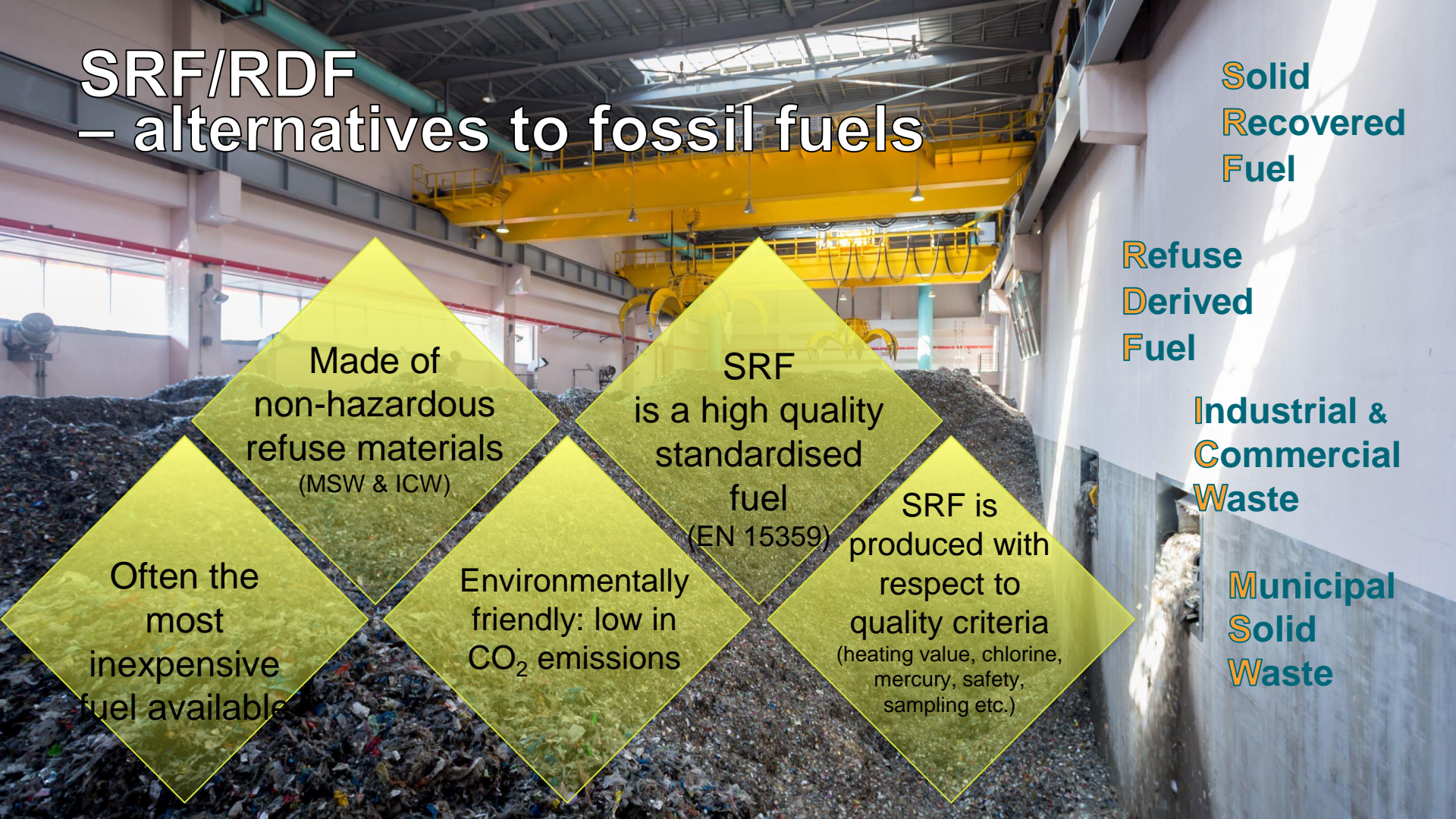
Made of  
non-hazardous  
refuse materials  
(MSW & ICW)

SRF  
is a high quality  
standardised  
fuel  
(EN 15359)

SRF is  
produced with  
respect to  
quality criteria  
(heating value, chlorine,  
mercury, safety,  
sampling etc.)

Often the  
most  
inexpensive  
fuel available

Environmentally  
friendly: low in  
CO<sub>2</sub> emissions



# SRF/RDF USERS



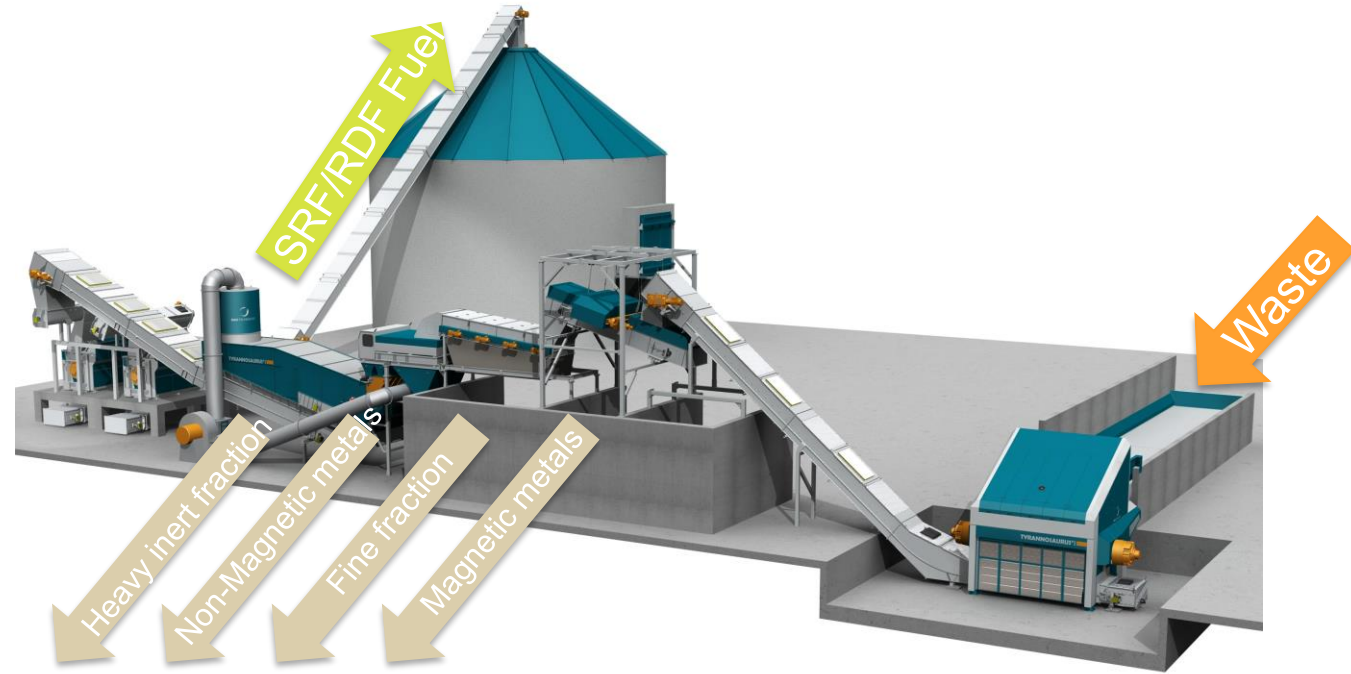
# COMPARISON OF FOSSILE CO<sub>2</sub> EMISSIONS

FUEL	HEATING VALUE	CO <sub>2</sub> EMISSION
Coal	25 MJ/KG	2.41 t of CO <sub>2</sub> / t of fuel
Pet coke	33 MJ/KG	3.34 t of CO <sub>2</sub> / t of fuel
Fuel oil	42 MJ/KG	3.16 t of CO <sub>2</sub> / t of fuel
<b>SRF</b>	<b>20 MJ/KG *</b>	<b>0.64 t of CO<sub>2</sub> / t of fuel</b>

\* Class 1 and 2 according to CEN/TC343, EN15359

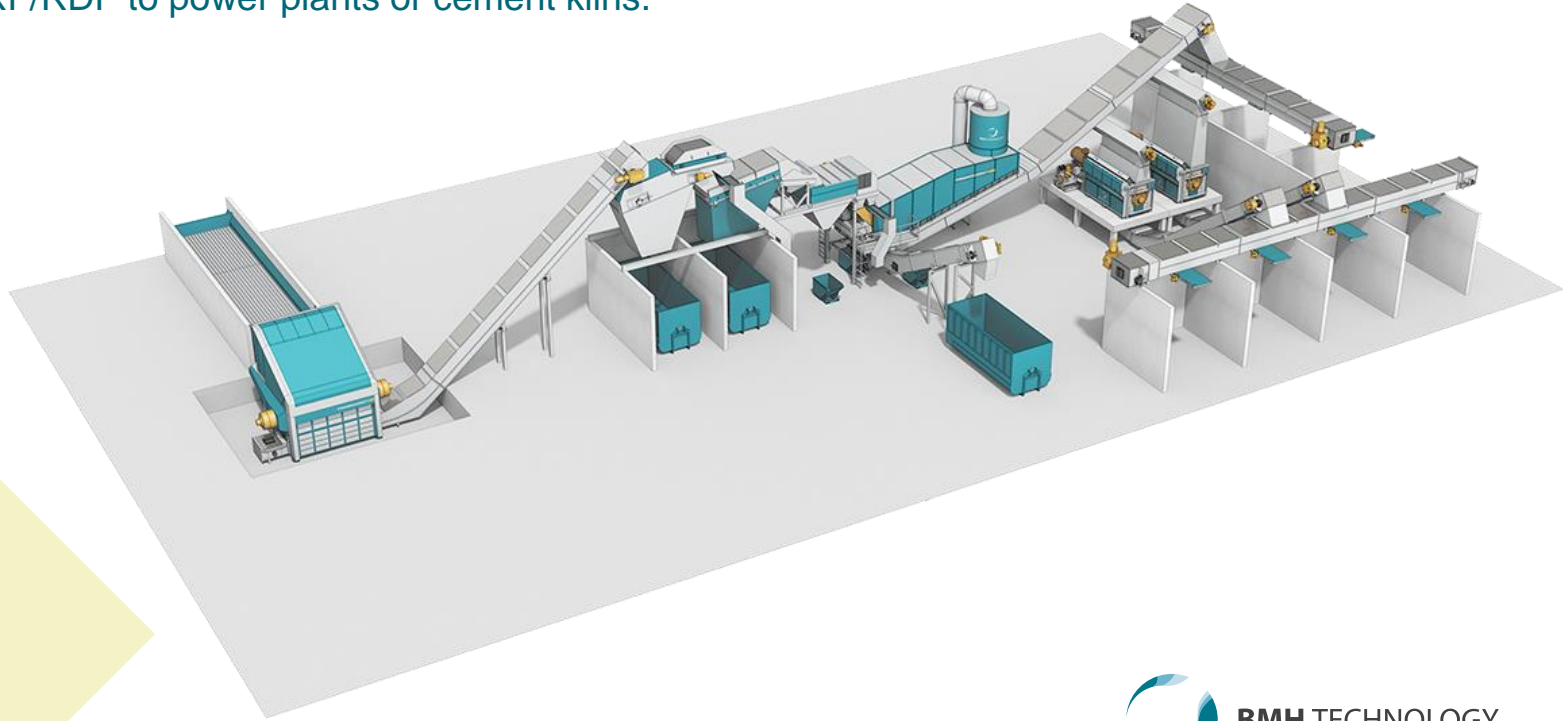


# THE BASIC SRF/RDF PRODUCTION PROCESS



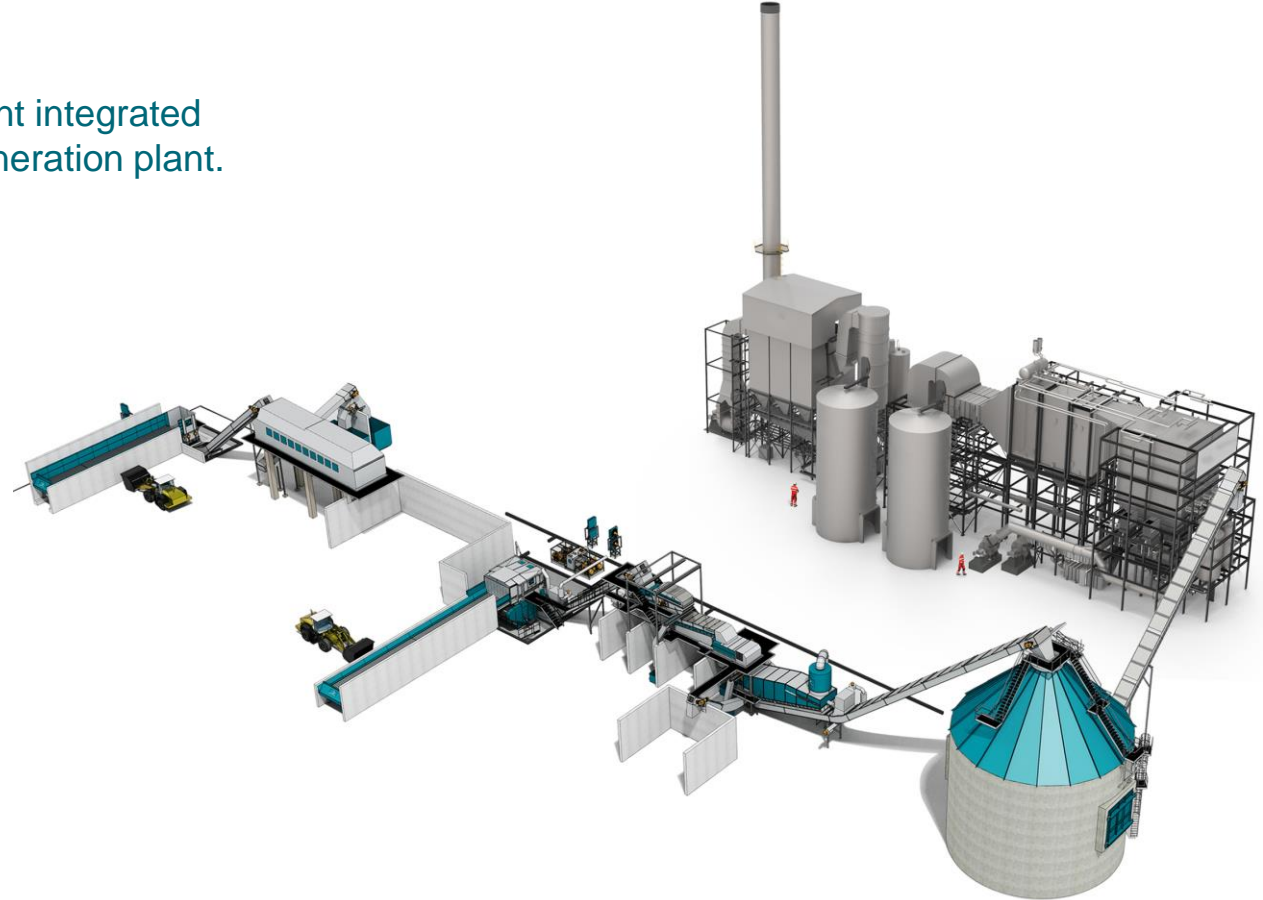
# EXAMPLE OF AN SRF/RDF PRODUCTION PLANT

A straightforward solution for waste management companies who sell the produced SRF/RDF to power plants or cement kilns.



# EXAMPLE OF A WASTE TO ELECTRICITY SOLUTION

SRF/RDF Production Plant integrated with an electric power generation plant.



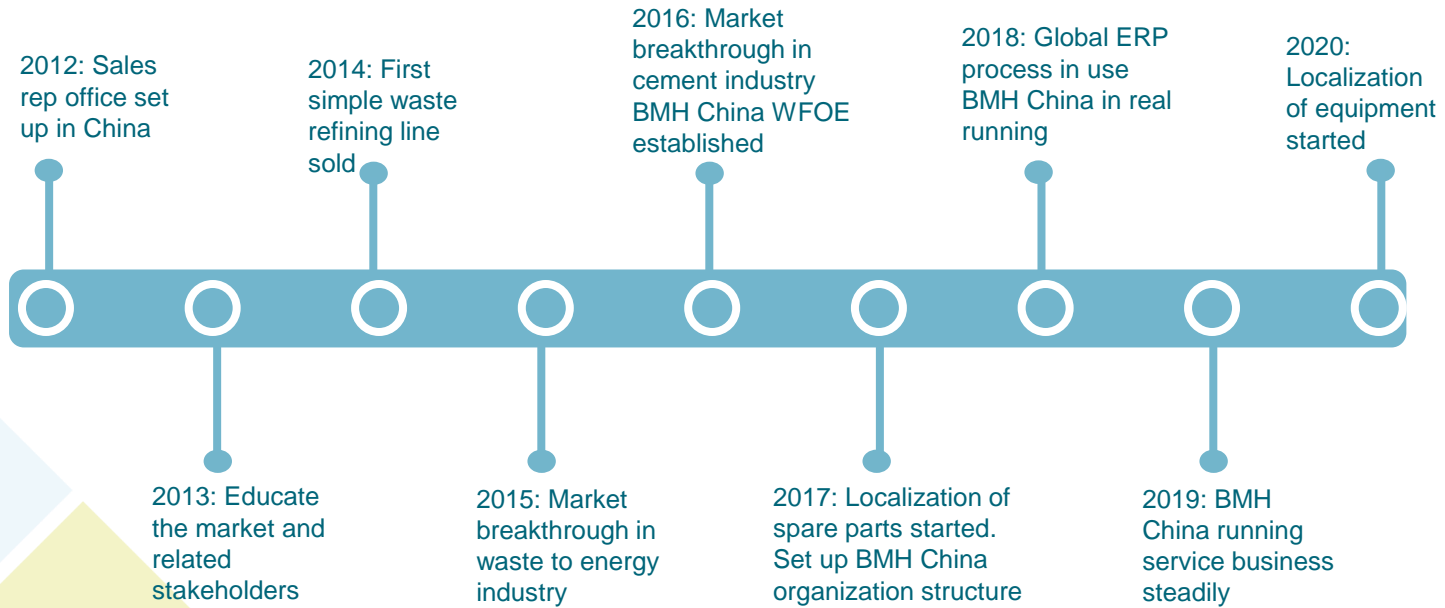
# BMH DELIVERIES: SRF/RDF PRODUCTION PLANTS

SITE	REGION	DESIGN CAPACITY
Aituo Eco-Energy	China	250,000 tons/a
DaKim	Taiwan	300,000 tons/a
Genco, Rayong	Thailand	100,000 tons/a
GPSC, Rayong	Thailand	220,000 tons/a
Sinoma / BBMG, Handan	China	250,000 tons/a
PosCo E&C, Pohang	South Korea	170,000 tons/a
Hangzhou Jin Jiang Group, Xiaoshan	China	700,000 tons/a
Hangzhou Jin Jiang Group, Hankou	China	700,000 tons/a
Rauman Biovoima Oy, Rauma	Finland	100,000 tons/a
PosCo E&C, Gwang Ju	South Korea	280,000 tons/a
Mälarenergi AB, Västerås	Sweden	450,000 tons/a
TPI Polene Power, Bangkok	Thailand	750,000 tons/a
ESTRE Ambiental S/A, São Paulo	Brazil	500,000 tons/a
Sita Starol Ltd., Chorzów	Poland	312,500 tons/a

More than 70 TYRANNOSAURUS® waste refining systems around the world.



# BMH JOURNEY IN CHINA



# FEW THINGS TO SHARE

- Follow the market change
- Adapt the business culture
- Find the right people
- Strong support from HQ



**THANK YOU!**



**BMH TECHNOLOGY**